



Glow Is The  
Essence Of Beauty

Skin  
care  
time



medfeindia

# Cosmetic Range



SUPER COSFE

## ALOEVERA GEL 100 ml



**Soothes sunburn:** Aloe vera gel helps cool down your skin when you've been in the sun too long, reducing pain and redness.

**Moisturizes skin:** It hydrates your skin without making it greasy, making it great for dry skin.

**Fights acne:** Aloe vera has natural antibacterial properties that help reduce acne and calm irritated skin.

SUPER COSFE

## PROFESSIONAL HAIR SERUM 100 ml

**Smooths Hair:** It helps to make your hair shiny and smooth, getting rid of frizz and flyaways.

**Adds Shine:** It gives your hair a healthy, natural shine, making it look more vibrant and well-kept.

**Helps with Tangles:** It makes hair easier to comb through, preventing knots and tangles.



SUPER COSFE

## VITAMIN-C SERUM 30 ml



**Brightens the Skin:** It helps to lighten dark spots and gives your face a fresh, glowing look.

**Reduces Wrinkles:** Vitamin C boosts collagen production, which helps your skin stay firm and smooth, reducing fine lines.

**Fights Skin Damage:** It protects your skin from harmful sun damage and pollution by neutralizing free radicals.



# Cosmetic Range



SUPER COSFE

## CALAMINE LOTION 100 ml

**Soothes itching:** It helps calm itching caused by rashes, insect bites, or skin conditions like chickenpox.

**Reduces irritation:** It can cool down irritated skin and reduce discomfort.

**Helps with rashes:** Calamine lotion is often used to treat skin rashes caused by allergies, poison ivy, or other irritants.

SUPER COSFE

## DAILY MOISTURIZING LOTION 100ml

**Keeps skin soft:** It helps to keep your skin feeling smooth and soft by providing it with hydration.

**Prevents dryness:** Regular use helps prevent your skin from getting dry, flaky, or rough, especially in cold weather.

**Improves skin texture:** It can make your skin feel healthier and look more even by keeping it moisturized.



SUPER COSFE

## DAILY MOISTURIZING CREAM 50 gm

**Reduces Fine Lines:** Some moisturizers have ingredients that can help reduce the appearance of fine lines and wrinkles.

**Promotes Healthy Skin:** Keeping skin moisturized supports its natural health, making it look fresh and glowing.

**Soothes Irritation:** It can calm irritated or sensitive skin, making it feel more comfortable.





# SUNSCREEN Gel

SPF  
50+

## Benefits

- 01 Protect from Sunburn
- 02 Moisturises Skin
- 03 Maintain Even Skin Tone
- 04 Prevents from Signs of Ageing



SHIELDS AGAINST  
UV RAYS



BOOSTS SKIN  
HYDRATION



# Cosmetic Range



SUPER COSFE

## CHARCOAL FACE WASH 100 ml

**Deep Cleanses Pores:** Charcoal draws out dirt, oil, and helping to keep your pores clean.

**Removes Excess Oil:** It helps balance oil production, preventing oily skin without drying it out.

**Helps Prevent Acne:** By removing impurities and excess oil, charcoal can reduce the chances of breakouts and acne.

SUPER COSFE

## FOAMING FACE WASH 100 ml

**Gentle Cleansing:** Foaming face wash creates a soft lather that gently cleans your skin without being harsh or irritating.

**Quick and Easy:** The foam spreads easily on your skin, making it quick to apply and rinse off.

**Removes Dirt and Oil:** It helps remove dirt, oil, and makeup, leaving your face feeling clean and fresh.



SUPER COSFE

## GO-GLUTA FACEWASH 100 ml

**Glutathione:** The glutathione in the facewash helps to brighten the skin and fight signs of aging.

**Brightens Skin:** Go Gluta Face Wash helps to brighten your skin, giving it a healthy glow.

**Removes Dirt & Oil:** It effectively removes dirt, excess oil, and impurities from your face, leaving it fresh.



# Cosmetic Range



SUPER COSFE

**GO-GLUTA** SOAP 75 gm

**Boosts Collagen Production:** Go Gluta soap contains ingredients that can help stimulate collagen production, which keeps the skin firm and youthful.

**Hydrates Skin:** The soap is moisturizing, keeping the skin hydrated and soft after use.

**Even Skin Tone:** Regular use can result in a more even skin tone, reducing the appearance of discoloration.

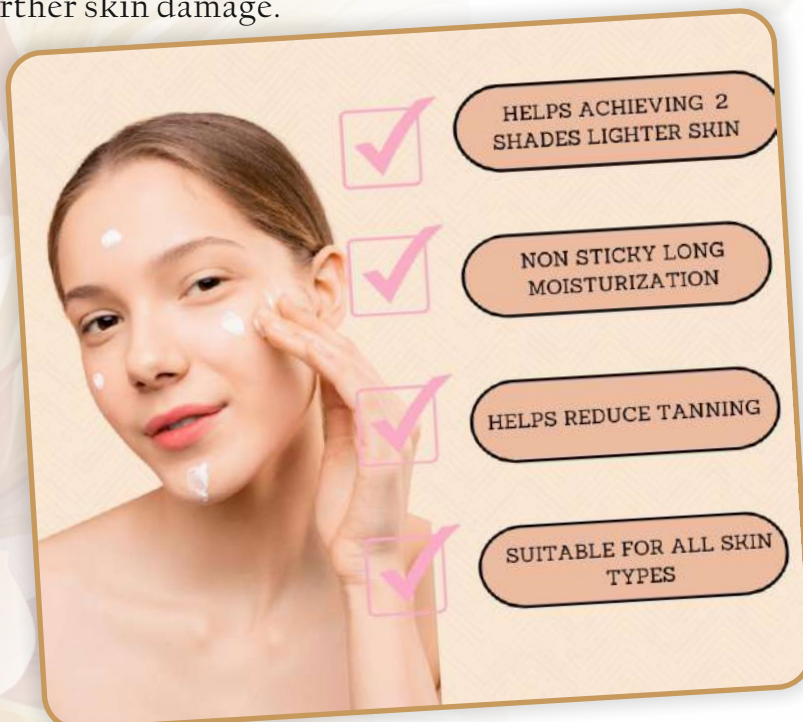
SUPER COSFE

**GO-GLUTA** CREAM 30 gm

**Fights Pigmentation:** Go Gluta Face Cream works on reducing pigmentation and helps even out your complexion for a clearer look.

**Anti-Aging Benefits:** The cream may help reduce the appearance of fine lines and wrinkles.

**Provides Sun Protection:** It also offers some level of protection against the sun's harmful UV rays, helping prevent further skin damage.





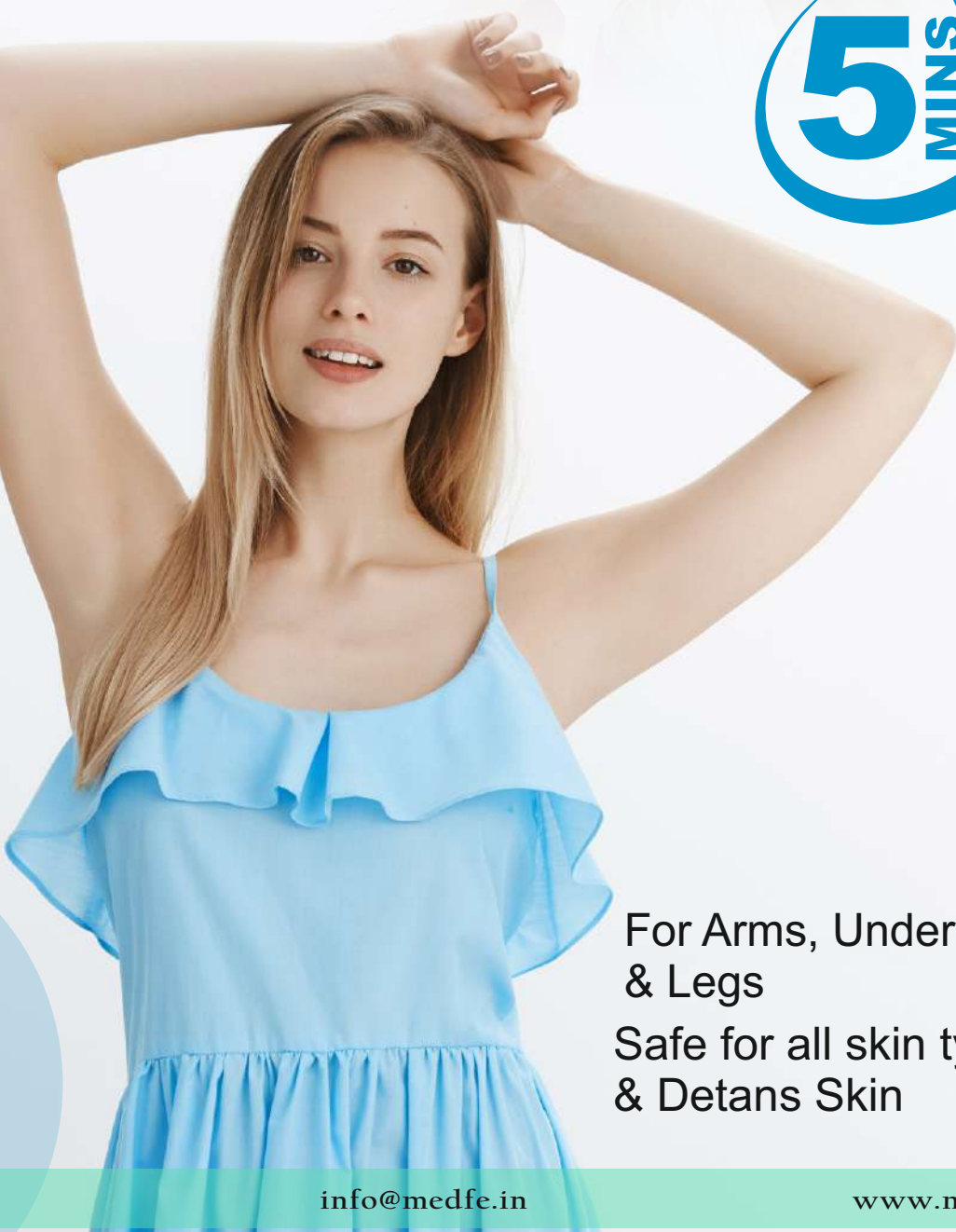


# Hair Removal

Unisex Spray

- ▶ Instantly Removes Hair.
- ▶ Doesn't Darken the Skin.
- ▶ Mild & Easy to use.
- ▶ Refreshing Fragrance.
- ▶ Suitable for sensitive skin.

*Make it*  
**Clear &  
Smooth....**



For Arms, Underarms  
& Legs  
Safe for all skin types  
& Delicate Skin



# Cosmetic Range



SUPER COSFE

## KALE SHAMPOO 300 ml

**Rich in Nutrients:** Kale is packed with vitamins like A, C, and K, which nourish the scalp and hair.

**Promotes Hair Growth:** The vitamins and antioxidants in kale may help stimulate hair follicles, encouraging new hair growth.

**Protects from Damage:** Kale contains antioxidants that help protect hair from environmental damage like pollution and UV rays.

SUPER COSFE

## DANDRUFF FREE SHAMPOO 200ml

**Reduces Flakes:** Dandruff-free shampoo helps to get rid of visible flakes on your scalp and hair, keeping your hair looking clean and fresh.

**Soothes Itchy Scalp:** It helps to calm and reduce itching caused by dry or irritated skin on the scalp.

**Improves Scalp Health:** Dandruff-free shampoo helps maintain a healthy scalp by balancing moisture and oil production.



SUPER COSFE

## ONION SHAMPOO 200 ml

**Prevents Premature Graying:** The sulfur in onion helps in the production of collagen, which can delay premature graying of hair.

**Reduces Hair Fall:** The antioxidants in onion can strengthen hair roots, reducing hair fall and breakage.

**Reduces Dandruff:** Onion shampoo can help reduce dandruff by balancing the scalp's oil production and preventing flakiness.



# Cosmetic Range



SUPER COSFE

**ONION** OIL 200ml

**Promotes Hair Growth** – Boosts blood circulation to the scalp, encouraging hair growth.

**Adds Shine and Softness** – Nourishes hair for a smooth, shiny look.

**Improves Scalp Health** – Fights infections and dandruff with antibacterial properties.

SUPER COSFE

**ZIT-GO** ACNE SOAP 75 gm

**Helps with Skin Infections:** Zitgo soap has anti bacterial properties that can help with skin infections like acne or rashes.

**Reduces Oiliness:** If you have oily skin, Zitgo soap can help manage oil production.

**Cleanses Deeply:** It deeply cleanses the skin, removing dirt, bacteria that can cause skin problems.



SUPER COSFE

**SCALP** HAIR OIL 200 ml

**Dandruff Control:** Helps reduce flakiness and itching, keeping the scalp clean and healthy.

**Reduces Hair Breakage:** Moisturizing oils protect hair from damage and split ends. Soothes

**Itchy Scalp:** Calms irritation and discomfort caused by dandruff.



# Get your daily dose of Moisturizing Nourishment....



MSW (MY SECRET WEAPON)

## ALMOND LOTION 200ml

**Lightens Dark Spots:** Regular use may help reduce the appearance of dark spots or blemishes over time.  
**Non-Greasy:** Absorbs quickly without leaving a greasy or sticky feeling.  
**Moisturizes Skin:** Keeps your skin soft and hydrated, preventing dryness.

MSW (MY SECRET WEAPON)

## PEACH LOTION 200 ml

**Source of Vitamins and Antioxidants:** Peaches are packed with vitamins, minerals that can positively impact your skin.  
**Skin Rejuvenation:** Peach body lotions can help regenerate skin tissues and tighten pores.  
**Hydrates and Nourishes Skin:** Peach body lotions provide a burst of hydration and deep nourishment.



MSW (MY SECRET WEAPON)

## ROSE LOTION 200 ml

**Deep Nourishment:** Rose body lotions provide in-depth nourishment and keep skin healthy.  
**Balances Skin:** Rose water helps maintain the skin's pH balance.  
**Pleasant Scent:** Rose body lotions leave your skin with a delightful scent and a refreshed feeling.





# Cosmetics Range

# EYE GLOW

## REDUCES DARK CIRCLES

Reduces the appearance of dark circles and brightens the under eye area.

## TIGHTENS SKIN

Reduces the appearance of dark circles and brightens the under eye area.

## HYDRATES SKIN

Replenishes the skin with moisture leading to plump and soft skin.

*Glow of confidence...*



**SAY BYE-BYE TO DARK CIRCLE**



# Cosmetic Range



## HAIR CARE



MEDFE

**HAIR FALL CONTROL** Shampoo  
200 ml

Reduces Hair Fall: Promote healthy growth.  
Improve scalp health: Make hair look thicker.  
Boost hair texture: Enhances the smoothness and softness of hair, making it more manageable.

MEDFE

**SHINE - C HAIR** SERUM  
60 ml

**Adds Shine:** Gives your hair a glossy, healthy shine, making it look more vibrant.

**Frizz Control:** Helps tame frizzy hair, keeping it smooth and manageable.

**Protects from Heat:** Acts as a shield against damage from styling tools like straighteners and curling irons.





# Transfol

## HAIR THERAPY SERUM

### KEY INGREDIENTS:

DM Water, Procapil, Baicapil, Redensyl, Hydrovance, Dimethicone, DM DM Hydantoin, Sodium CMC, Methylchloroisothiazolinone, Fragrance, 6 Gingerol, Topical Valproic Acid, Catechin, Biotin and Cham.

## Benefits

- 01** Control Hair Fall
- 02** Control Dandruff
- 03** Repair Split Ends
- 04** Repair Frizzy Hair



# Cosmetic Range



MEDFE

## RENEWAL Face Serum 30 ml

**Boosts Skin Hydration:** Helps keep your skin moisturized and smooth.

**Reduces Fine Lines:** Can reduce the appearance of wrinkles and aging signs.

**Promotes Skin Regeneration:** Encourages the skin to renew itself and look healthier.

GLORY-C

## VITAMIN-C SERUM 30 ml

**Fights skin damage:** Protects against damage from sun and pollution.

**Reduces inflammation:** Calms irritated skin and reduces redness.

**Hydrates skin:** Helps to keep skin moisturized and plump.



GLORY-F

## Retinol FACESerum 30 ml

**Reduces Wrinkles:** Helps smooth out fine lines and wrinkles.

**Tightens Skin:** Helps firm up and lift sagging skin.

**Brightens Skin:** Evens out skin tone and reduces dark spots.



# FOOTCURE

## Foot Cream

Lotus Oil / Thyme Oil / White Cucumene / Rosehip Oil  
With Castor Oil, Tea Tree Oil, Bees Wax & Glycerine

### Heals Cracks

Heals cracked heels and softens calluses

### Reduces Odour

Refreshes skin and reduces odour

### Healthy Feet

Keeps toe nails shiny and healthy

### Nourishes Dry Skin

Combats dryness and makes in soft & smooth



**SAY BYE-BYE TO DRYNESS**

# Cosmetic Range



MEDFE

## ACNE FACE WASH 30 gm

**Prevents new pimples:** Keeps the skin free from bacteria that cause breakouts.

**Improves skin texture:** Regular use can lead to smoother and clearer skin.

**Reduces oil:** Controls excess oil production, which can lead to acne.

MEDFE

## MELACLEAN FACE WASH 30 ml

**Helps in better treatment of melasma.**

**Deeply cleanses & unclogs pores:** Experience the deep cleansing & unclogging with this dermatologically tested facewash.

**Refreshes & revitalizes skin:** Feel refreshed & revitalized with deep cleansing & enhance your healthy glow.



MEDFE

## SUNGARD 50/30 CREAM 100 ml

**Long lasting hydration & luminous skin**  
Sunscreen Gel is a sunscreen that protects against both UVA and UVB radiation helping to block 98% of harmful UV rays and prevent sunburn





# Cosmetic Range



MEDFE

## VITAMIN-C CREAM 30 gm



**Antioxidant Protection:** Protects against environmental stressors like pollution.  
**Supports Skin Renewal:** Helps with faster skin cell turnover for healthier skin.  
**Minimizes Pores:** Can help reduce the appearance of large pores.

MEDFE

## MELABLOCK CREAM 30 ml

**Fights skin damage:** Protects against damage from sun and pollution.  
**Reduces inflammation:** Calms irritated skin and reduces redness.  
**Hydrates skin:** Helps to keep skin moisturized and plump.



MEDFE

## GLORY-B CREAM 100 ml

**Reduces Wrinkles:** Helps smooth out fine lines and wrinkles on the face, especially around the eyes and forehead.

**Non-invasive:** Unlike Botox injections, it provides similar effects without the need for needles.

**Safe for Sensitive Skin:** Usually formulated to be gentle, making it suitable for most skin types.





# *Thankyou*

*We want to thankyou for how  
wonderful work with you!*

